



**Thomas Brezing, *Refuge*,**  
mixed media on paper  
101 x 72cm



Vera Klute, *Frizz*, 2021, oil on linen, 130 x 250cm

## ***The Loneliness of Being German: Thomas Brezing & Vera Klute***

**9<sup>th</sup> July – 12<sup>th</sup> September**

This two-person exhibition of new work by Thomas Brezing and Vera Klute will interrogate the issue of "identity" and ask what creates a sense of belonging and how influential is the past? These questions resonate throughout the work of Klute and Brezing. Through their personal experiences of living in Ireland, they examine German sensitivities and question how they deal with identity, heritage and guilt. The artists share many similarities in their personal lives and practices and share a "love for the handmade in art" and a curiosity about different materials. However they also have different approaches to their respective practices with Klute demonstrating a detailed and refined approach to the human body while Brezing describes his work as raw, rough and often about the environment.

Both artists were born in Germany and are long-time residents in Ireland.

Brezing, a multi-disciplinary artist has exhibited widely, he is the recipient of many awards and his work is included in several public and private collections including National Portrait Collection

Vera Klute works in a variety of different media and exhibits her work in Ireland and abroad. She has received many awards including the Hennessey Portrait Prize at the National Gallery. Recently Klute completed her first public art commission of Luke Kelly which is situated in Dublin 1.

The exhibition is accompanied by a publication with text by Cherry Smyth.

Works are for sale, please email [artgallery@limerick.ie](mailto:artgallery@limerick.ie) with any queries

Queries please contact [artgallery@limerick.ie](mailto:artgallery@limerick.ie), further information available on [www.gallery.limerick.ie](http://www.gallery.limerick.ie)

Carnegie Building, Pery Square, Limerick, Ireland.

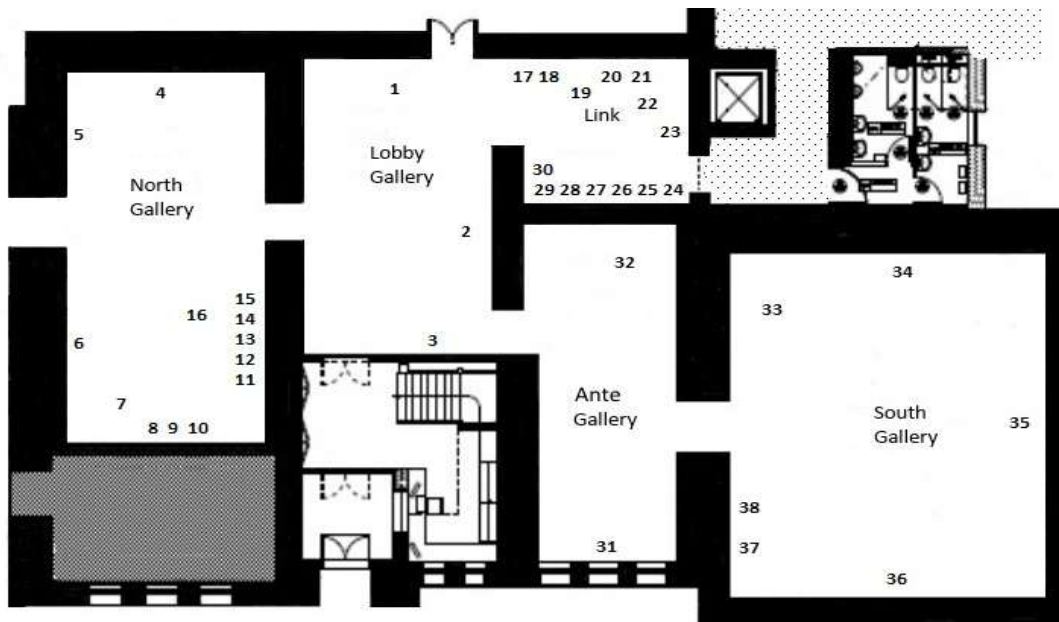
**FREE ADMISSION**

Tel: +353(0)61 310633; F:+353(0)61 310228; Email: [artgallery@limerick.ie](mailto:artgallery@limerick.ie); Web [www.gallery.limerick.ie](http://www.gallery.limerick.ie)

Opening Hours: Monday - Saturday 10-5pm; Sunday 12-5pm

**LAST ENTRY 15 minutes before closing**

**Closed on Public & Bank Holidays.**



		Title	medium	dimensions
1	Vera Klute	<i>Putting Down Roots</i>	Jesmonite,	35 x 15 x 25cm (edition of 5)
2	Vera Klute	<i>Frizz,</i>	Oil on Linen	130 x 250 cm
3	Thomas Brezing	<i>Refuge,</i>	Mixed media on paper	101 x 72cm
4	Vera Klute	<i>Breakage, 2019</i>	Oil on linen	130 x 250cm
5	Vera Klute	<i>Burst</i>	Oil on Linen	130 x 170 cm
6	Vera Klute	<i>Upheaval</i>	Oil on Linen	130 x 170 cm
7	Vera Klute	<i>Ingrown,</i>	Walnut veneer on carved fo	38 x 30 x 40cm
8	Vera Klute	<i>Coitus, 2017</i>	Etching with drypoint	28 x 35cm
9	Vera Klute	<i>Partus, 2017</i>	Etching with drypoint	28 x 35cm (edition of 12)
10	Vera Klute	<i>Mors, 2017</i>	Etching with drypoint	28 x 35cm
11	Vera Klute	<i>Nicole's Communion</i>	Oil on Board	27 x 42 cm
12	Vera Klute	<i>Franz</i>	Oil on Board	35 x 26 cm
13	Vera Klute	<i>Frauenfrühstück</i>	Oil on Board	34 x 26 cm
14	Vera Klute	<i>She knew the end was coming</i>	Oil on Board	21 x 32.5cm
15	Vera Klute	<i>Horde</i>	Oil on Board	40 x 35 cm
16	Vera Klute	<i>Outgrown</i>	Walnut veneer on carved fo	30 x 35 x 50 cm
17	Vera Klute	<i>At the dead of night</i>	Monoprint	21 x 29.5cm
18	Vera Klute	<i>Wünneberg</i>	Monoprint	34.5 x 29.5cm
19	Vera Klute	<i>Royal Canal,(River Bank),</i>	Bronze	16 x 15 x 11cm
20	Vera Klute	<i>Horseplay</i>	Monoprint	21 x 29.5cm
21	Vera Klute	<i>Kaffeetrinken</i>	Monoprint	21 x 29.5cm
22	Vera Klute	<i>Golden Duck</i>	Bronze	17 x 10 x 17cm
23	Vera Klute	<i>Isí</i>	Monoprint	31.5 x 38cm
24	Vera Klute	<i>Spenners</i>	Monoprint	21 cm x 29.5cm
25	Vera Klute	<i>The deep dark woods</i>	Monoprint	21 cm x 29.5cm
26	Vera Klute	<i>Michaela</i>	Monoprint	21 cm x 29.5cm
27	Vera Klute	<i>Untitled</i>	Monoprint	21 cm x 29.5cm
28	Vera Klute	<i>Fiengenburg</i>	Monoprint	21 cm x 29.5cm
29	Vera Klute	<i>Pylon</i>	Bronze	27 x 18 x 9cm
30	Vera Klute	<i>Self-portrait</i>	Monoprint	34.5cm x 29.5cm
31	Vera Klute	<i>Falling down</i>	Animation	3:00 min (edition of 5)
32	Thomas Brezing	<i>There Will Be Singing In The Dark,</i>	stuffed rugby balls installation	variable dimensions
33	Thomas Brezing	<i>The Numbers Don't Add Up,</i>	oil on canvas	180 x 180cm
34	Thomas Brezing	<i>Balm,</i>	oil on canvas	200 x 400cm
35	Thomas Brezing	<i>Perhaps The Future Doesn't Need Us,</i>	oil on canvas	200 x 400cm
36	Thomas Brezing	<i>Unexpected Guests,</i>	oil on canvas	200 x 400cm
37	Thomas Brezing	<i>Found Object</i>	Oil on canvas	60 x 80cm
38	Thomas Brezing	<i>Ordinance</i>	Oil on canvas	50 x 60cm

Carnegie Building, Pery Square, Limerick, Ireland.

FREE ADMISSION

Tel: +353(0)61 310633; F:+353(0)61 310228; Email: [artgallery@limerick.ie](mailto:artgallery@limerick.ie); Web [www.gallery.limerick.ie](http://www.gallery.limerick.ie)

Opening Hours: Monday - Saturday 10-5pm; Sunday 12-5pm

LAST ENTRY 15 minutes before closing

Closed on Public &amp; Bank Holidays.